



Work Horse

Blue Ridge Manufacturing, LLC



Available Sizes
7'-9' SW ~ 8.5'-24' DW



Try our New
Retractable Step

*Shown with optional Equipment
Stake Racks & ICC-10k Hitch*

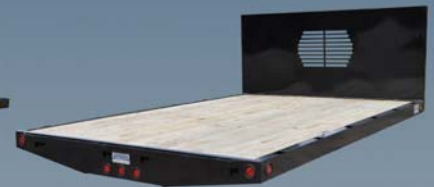
Workhorse Family



Workhorse Flatbed



Diamond Workhorse



Wood Workhorse

- ~ Floor Material: Smooth 11ga(Std), 3/16", 1/4" & Treadplate 1/8", 3/16" & 1/4" & P.T. Wood
- ~ Structural Crossmembers: 3"(Std) & 4", ~ Optional, Apitong or Rubber Floors,
- ~ Crossmember Spacing: 16"(Std), 12" Outside Pockets & Rub Rails, Stake Racks
- ~ Structural Long Sills: 6"(Std), 7", 8" -Tarps Systems, Tree Bars & LED Lights

Our **Workhorse** bed is built to carry the load. The **Workhorse** design includes structural channel cross members & long sills to make this one tough flatbed. Our long sill reinforced bulkhead is the toughest in the industry. Other features include recessed lights, quality wire harness, automotive undercoating, all welded floor construction, inside stake pockets. Standard is a durable PPG Powder Coat black finish. With endless options this bed can be custom built, at a price you can afford.

"Quality Truck Bodies, Engineered to Last"

Freedom Line-Up

Blue Ridge Manufacturing, LLC

(706) 258-3849

(877) 423-5282



**One Supplier
Endless Possibilities**

www.blueridgemfg.com

Blue Ridge Manufacturing reserves the right to change specifications at any time. For more information about possible changes since the last printing of this marketing piece call (706) 258-3849. The information contained in this publication shall not be considered in a dispute over features, options or specifications. Photos may show optional equipment that is not included in the base price. Current details and option prices are available in the retail price guide.

Distributed By:

"Quality Truck Bodies, Engineered to Last"